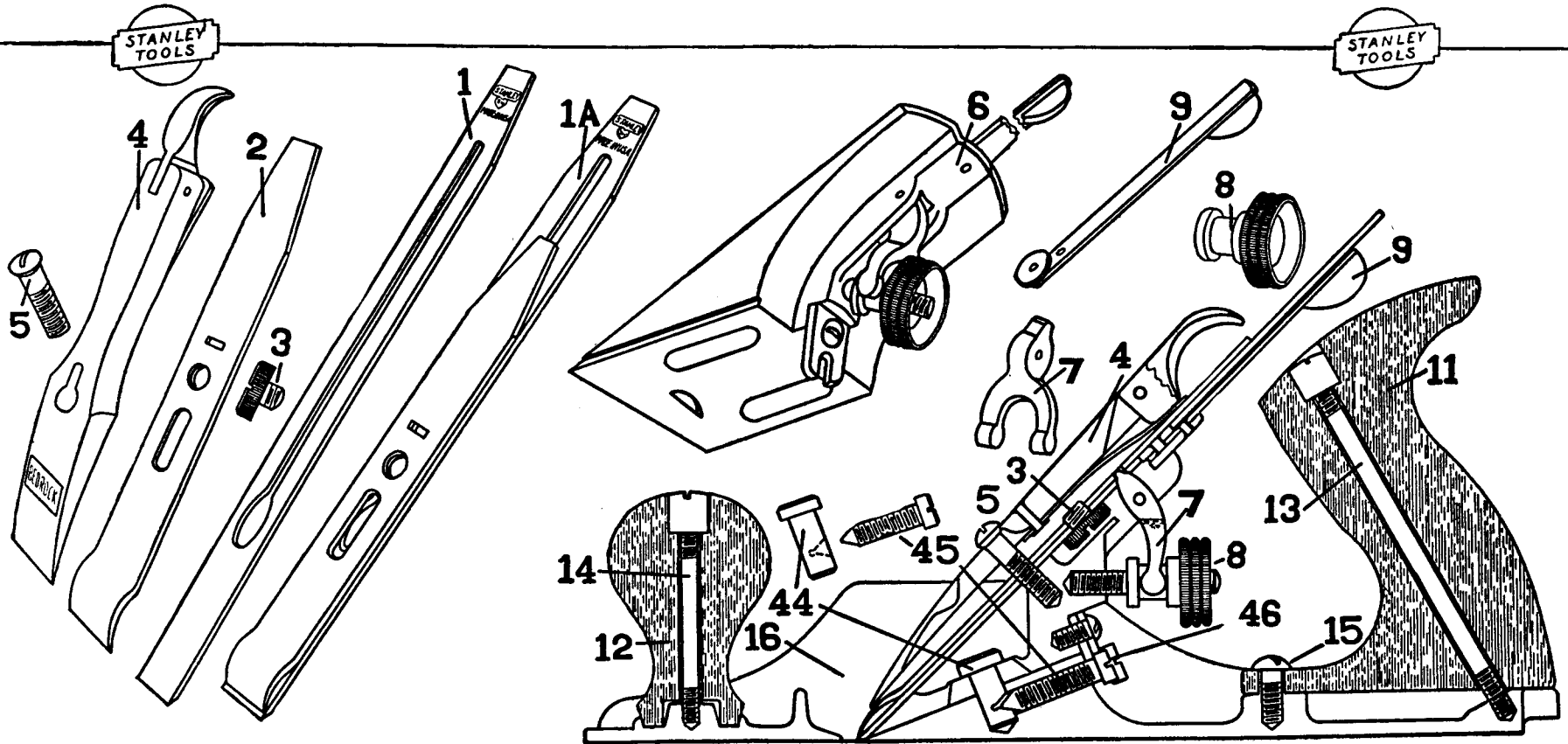


# STANLEY BED ROCK PLANES



**1A** DOUBLE PLANE IRON  
**1** SINGLE " "  
**2** PLANE IRON CAP  
**3** CAP SCREW

**4** LEVER CAP  
**5** " " SCREW  
**6** FROG COMPLETE  
**7** "Y" ADJUSTING LEVER  
**8** ADJUSTING NUT

**9** LATERAL ADJUSTING LEVER  
**11** HANDLE  
**12** KNOB  
**13** HANDLE BOLT & NUT  
**14** KNOB " " "  
**15** HANDLE SCREW

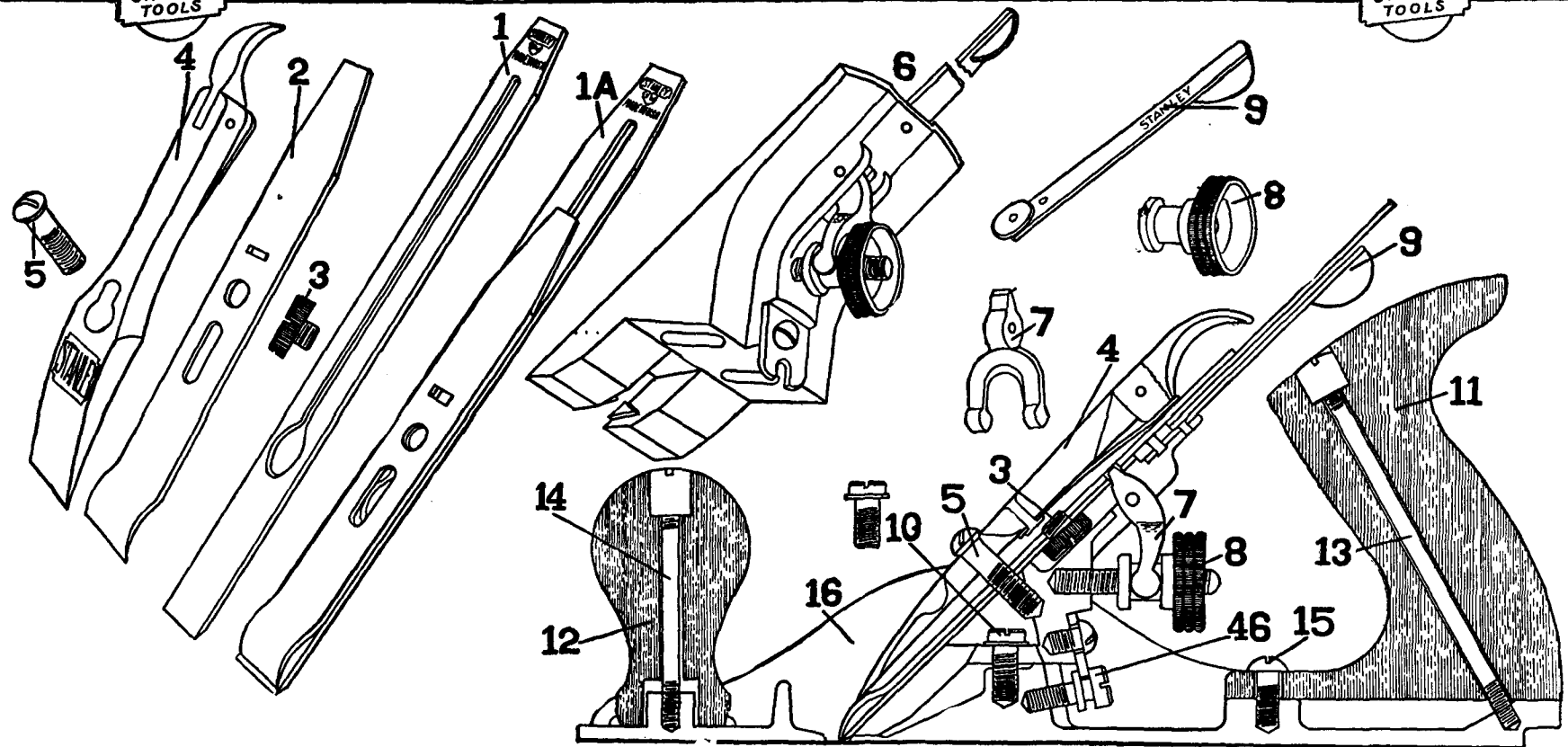
**16** BOTTOM  
**44** FROG PIN  
**45** FROG CLAMPING SCREW  
**46** FROG ADJUSTING SCREW

THE STANLEY RULE & LEVEL PLANT.  
THE STANLEY WORKS  
 NEW BRITAIN, CONN. U.S.A.

EDUCATIONAL DEPARTMENT  
 CHART NO 104

PRINTED IN U.S.A.

# STANLEY BAILEY PLANES



- |                             |                              |                                  |                                |
|-----------------------------|------------------------------|----------------------------------|--------------------------------|
| <b>1A</b> DOUBLE PLANE IRON | <b>4</b> LEVER CAP           | <b>9</b> LATERAL ADJUSTING LEVER | <b>14</b> KNOB BOLT & NUT      |
| <b>1</b> SINGLE " "         | <b>5</b> " " SCREW           | <b>10</b> FROG SCREW             | <b>15</b> HANDLE SCREW         |
| <b>2</b> PLANE IRON CAP     | <b>6</b> FROG COMPLETE       | <b>11</b> HANDLE                 | <b>16</b> BOTTOM               |
| <b>3</b> CAP SCREW          | <b>7</b> "Y" ADJUSTING LEVER | <b>12</b> KNOB                   | <b>46</b> FROG ADJUSTING SCREW |
|                             | <b>8</b> ADJUSTING NUT       | <b>13</b> HANDLE BOLT & NUT      |                                |

THE STANLEY RULE & LEVEL PLANT.  
THE STANLEY WORKS  
 NEW BRITAIN, CONN. U.S.A.

EDUCATIONAL DEPARTMENT  
 CHART NO 103

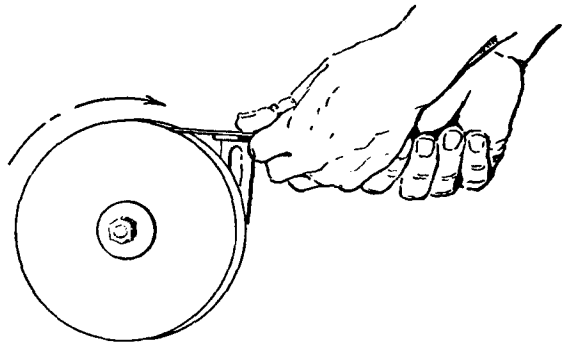
PRINTED IN U.S.A.

# HOW TO GRIND STANLEY PLANE IRONS

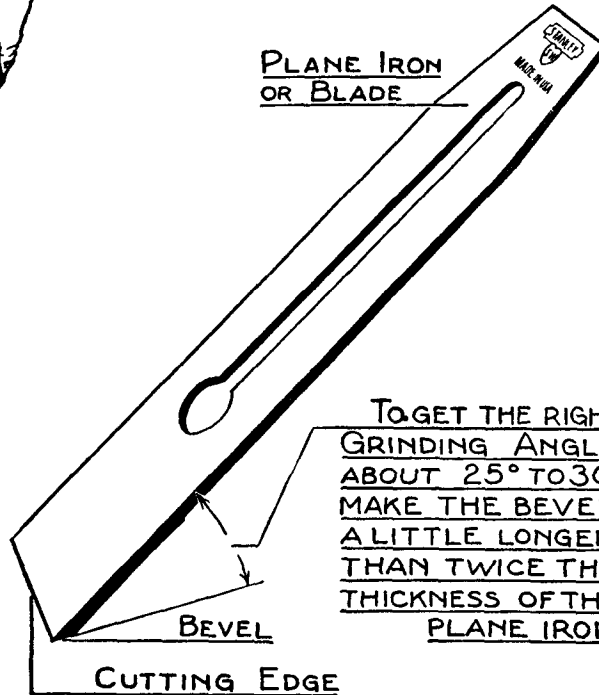
(THIS ALSO APPLIES TO CHISELS)

STANLEY  
TOOLS

STANLEY  
TOOLS



PLANE IRON  
OR BLADE



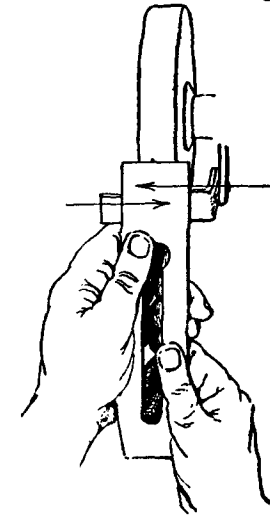
TO GET THE RIGHT  
GRINDING ANGLE  
ABOUT 25° TO 30°  
MAKE THE BEVEL  
A LITTLE LONGER  
THAN TWICE THE  
THICKNESS OF THE  
PLANE IRON

GRINDING STRAIGHTENS THE EDGE AND RESTORES THE BEVEL PREPARATORY TO SHARPENING BY WHETTING ON THE OIL STONE.

THE GRIND STONE SHOULD TURN TOWARD THE PLANE IRON.

USE THE GUIDE AS IT ASSURES A FLAT EVEN BEVEL.

KEEP THE PLANE IRON COOL TO PREVENT BURNING, OR SOFTENING THE STEEL, BY FREQUENT DIPPING IN WATER. STONES RUNNING IN WATER OR OIL ARE PREFERABLE.



MOVE THE PLANE IRON FROM SIDE TO SIDE TO GRIND ALL PARTS OF THE BEVEL AND TO KEEP THE WHEEL TRUE.

THE EDGE SHOULD BE STRAIGHT AND ALMOST AT RIGHT ANGLES TO THE SIDES OF THE PLANE IRON.

## WHEN TO GRIND A PLANE IRON OR A CHISEL

WHEN THE CUTTING EDGE IS NICKED.

WHEN THE BEVEL HAS BEEN WORN DOWN BY MUCH WHETTING.

WHEN THE BEVEL HAS BEEN ROUNDED BY CARELESS WHETTING.

AVOID A BEVEL TOO LONG AND THIN. IT IS WEAK AND WILL NICK EASILY.

AVOID A BEVEL TOO SHORT AND THICK. IT WILL NOT ENTER THE WOOD EASILY.

THE STANLEY RULE & LEVEL PLANT.  
THE STANLEY WORKS  
NEW BRITAIN, CONN. U.S.A.

COPYRIGHT 1922

EDUCATIONAL DEPARTMENT  
CHART NO 112

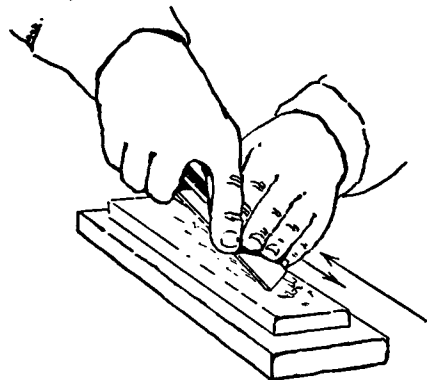
PRINTED IN U.S.A.

# HOW TO WHET STANLEY PLANE IRONS

(THIS ALSO APPLIES TO CHISELS)



WHET THE PLANE IRON ON THE OIL STONE TO PRODUCE THE REAL SHARP CUTTING EDGE



HOLD THE PLANE IRON IN THE RIGHT HAND WITH THE LEFT HAND HELPING PLACE THE BEVEL ON THE STONE WITH THE BACK EDGE SLIGHTLY RAISED

MOVE THE PLANE IRON BACK AND FORTH TO KEEP THE BEVEL STRAIGHT BE SURE THE HANDS MOVE PARALLEL TO THE STONE SO THAT THE ANGLE BETWEEN THE PLANE IRON AND THE STONE WILL STAY THE SAME THROUGHOUT THE STROKE

USE ENOUGH OIL TO KEEP THE SURFACE OF THE STONE MOIST. IT KEEPS THE STONE SHARP BY PREVENTING PARTICLES OF STEEL FILLING THE PORES OF THE STONE. TRY TO WEAR THE STONE EVENLY.



PLANE MARKS WILL SHOW LESS ON A FINISHED SURFACE IF THE CORNERS OF THE PLANE IRON ARE SLIGHTLY ROUNDED

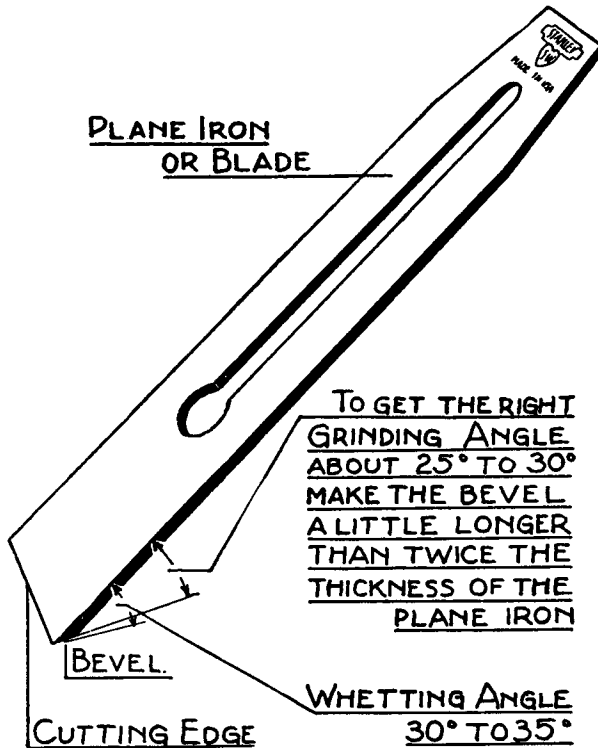


ROCKING THE PLANE IRON PRODUCES A ROUNDED BEVEL THAT WILL NOT CUT WELL.



A BEVEL ON THE FLAT SIDE OF THE PLANE IRON PREVENTS THE CAP IRON FITTING TIGHT. SHAVINGS WILL CLOG THE PLANE

PLANE IRON OR BLADE

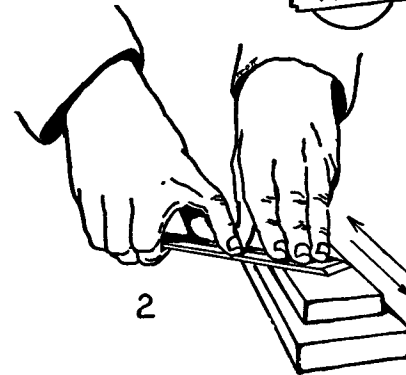


TO GET THE RIGHT GRINDING ANGLE ABOUT 25° TO 30° MAKE THE BEVEL A LITTLE LONGER THAN TWICE THE THICKNESS OF THE PLANE IRON

BEVEL

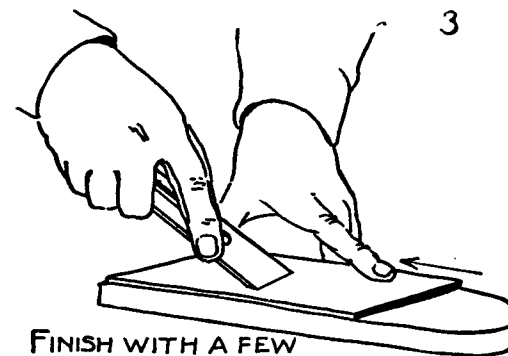
CUTTING EDGE

WHETTING ANGLE 30° TO 35°



REMOVE THE WIRE OR FEATHER EDGE BY TAKING A FEW STROKES WITH THE FLAT SIDE OF THE PLANE IRON HELD FLAT ON THE STONE. AVOID THE SLIGHTEST BEVEL ON THIS SIDE.

IF A NICK OR A SHINY EDGE OF BLUNTNESS CAN BE SEEN REPEAT BOTH PROCESSES OF WHETTING.

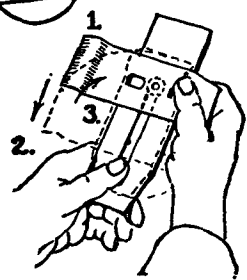


FINISH WITH A FEW STROKES ON A LEATHER STROP TO PRODUCE A KEENER EDGE.

THE STANLEY RULE & LEVEL PLANT  
NEW BRITAIN, CONN. U.S.A.

EDUCATIONAL DEPARTMENT  
CHART No 113

# HOW TO ASSEMBLE THE STANLEY DOUBLE PLANE IRON



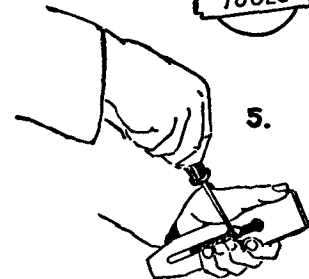
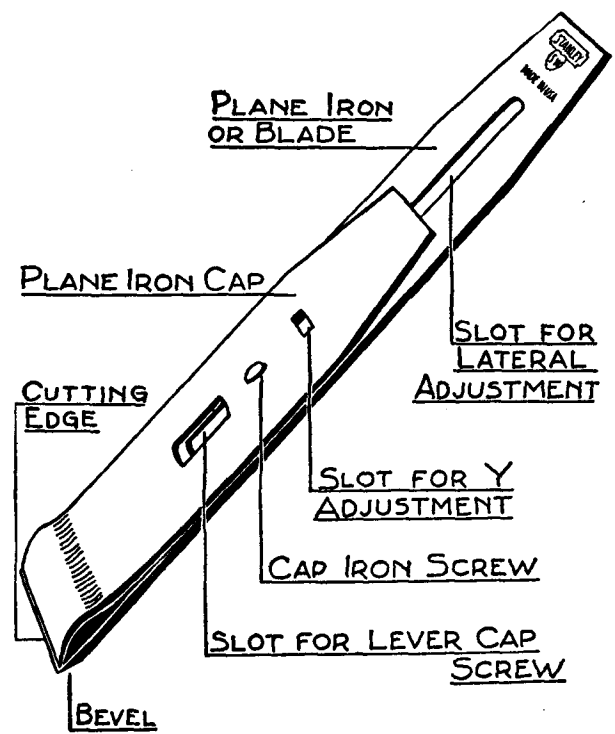
**TO PUT THE PLANE IRON AND THE PLANE IRON CAP TOGETHER.** 1-LAY THE PLANE IRON CAP ON THE FLAT SIDE OF THE PLANE IRON, AS SHOWN, WITH THE SCREW IN THE SLOT. 2-DRAW THE PLANE IRON CAP BACK. 3-TURN IT STRAIGHT WITH THE PLANE IRON.



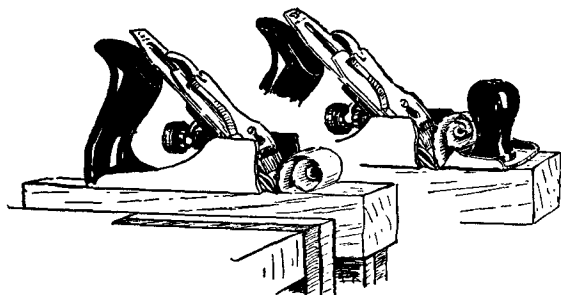
4-ADVANCE THE PLANE IRON CAP UNTIL THE EDGE IS JUST BACK OF THE CUTTING EDGE OF THE PLANE IRON. THE PLANE IRON CAP MUST NOT BE DRAGGED ACROSS THE CUTTING EDGE.

THE PLANE IRON CAP SHOULD EXTEND  $\frac{1}{16}$ " BACK OF THE CUTTING EDGE FOR GENERAL WORK. ON CROSS GRAINED OR CURLY WOOD IT SHOULD BE AS NEAR TO THE CUTTING EDGE AS POSSIBLE.

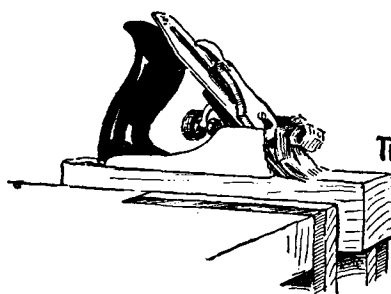
## DOUBLE PLANE IRON



5-HOLD THE PLANE IRON AND THE PLANE IRON CAP FIRMLY AND TIGHTEN THE SCREW TO HOLD THE TWO PARTS TOGETHER



THE PLANE IRON CAP BREAKS AND CURLS THE SHAVING TOGETHER WITH THE TOE OF THE PLANE IT PREVENTS THE WOOD SPLITTING AHEAD OF THE CUTTING EDGE PRODUCING A SMOOTH SURFACE. THE PLANE IRON CAP ALSO SERVES TO STIFFEN THE PLANE IRON.

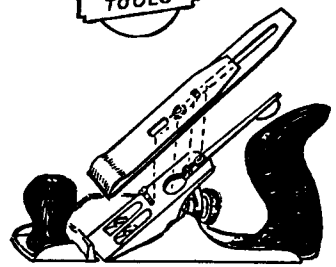


THE PLANE IRON CAP AND THE TOE REMOVED THE WOOD SPLITS AHEAD OF THE CUTTING EDGE LEAVING A ROUGH SURFACE.

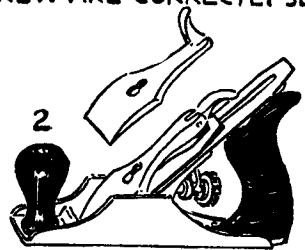
THE STANLEY RULE & LEVEL PLANT  
THE STANLEY WORKS  
NEW BRITAIN, CONN. U.S.A.  
COPYRIGHT 1928

EDUCATIONAL DEPARTMENT  
CHART No 114

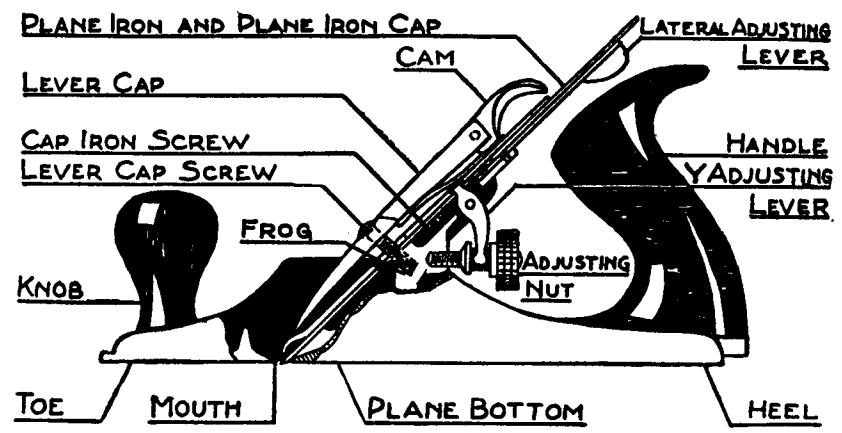
# HOW TO SET THE STANLEY PLANE



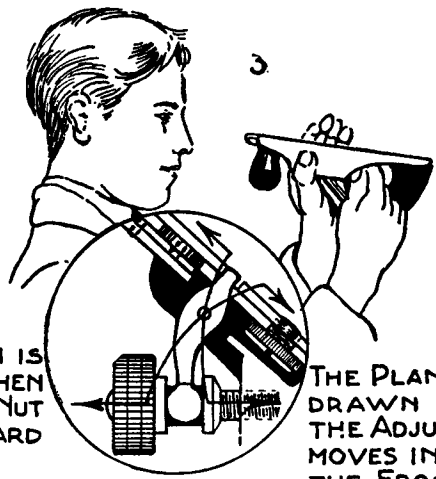
TO PUT THE PLANE TOGETHER LAY THE PLANE IRON, BEVEL SIDE DOWN, ON THE FROG. BE SURE THE ROLLER ON THE LATERAL ADJUSTING LEVER, THE END OF THE Y ADJUSTING LEVER AND THE HEAD OF THE PLANE IRON CAP SCREW ARE CORRECTLY SEATED



2  
SLIP THE LEVER CAP UNDER THE LEVER CAP SCREW AND PRESS DOWN THE CAM. IF THE PLANE IRON IS IN THE CORRECT POSITION THE CAM WILL EASILY SNAP IN PLACE. IF THE CAM WILL NOT SNAP IN PLACE EASILY, SLIGHTLY LOOSEN THE LEVER CAP SCREW. IF THE PLANE IRON IS NOT FIRMLY HELD WHEN THE CAM IS IN PLACE SLIGHTLY TIGHTEN THE LEVER CAP SCREW.

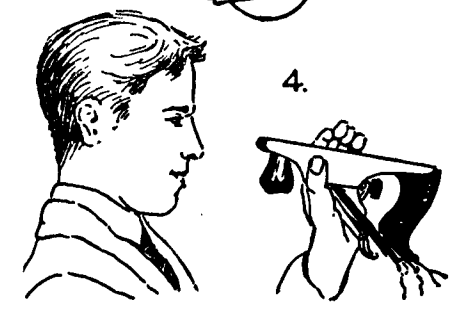


TO ADJUST FOR THE THICKNESS OF THE SHAVING SIGHT ALONG THE BOTTOM OF THE PLANE AND TURN THE ADJUSTING NUT UNTIL THE CUTTING EDGE PROJECTS ABOUT THE THICKNESS OF A HAIR.

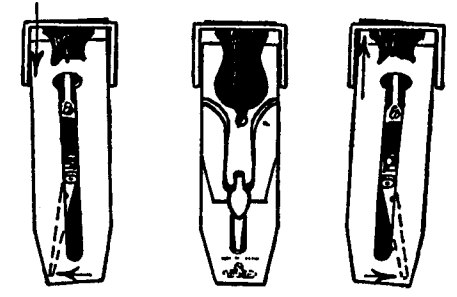


THE PLANE IRON IS PUSHED OUT WHEN THE ADJUSTING NUT MOVES OUT TOWARD THE HANDLE.

THE PLANE IRON IS DRAWN IN WHEN THE ADJUSTING NUT MOVES IN TOWARD THE FROG.



4.  
TO ADJUST FOR THE EVENNESS OF THE SHAVING SIGHT ALONG THE BOTTOM OF THE PLANE AND MOVE THE LATERAL ADJUSTING LEVER TOWARD THE RIGHT OR THE LEFT.



KNOB, LEVER CAP AND PLANE IRON CAP REMOVED TO SHOW THE ACTION OF THE LATERAL ADJUSTING LEVER.

THE STANLEY RULE & LEVEL PLANT  
THE STANLEY WORKS  
NEW BRITAIN, CONN. U.S.A.  
COPYRIGHT 1936

EDUCATIONAL DEPARTMENT  
CHART No 115